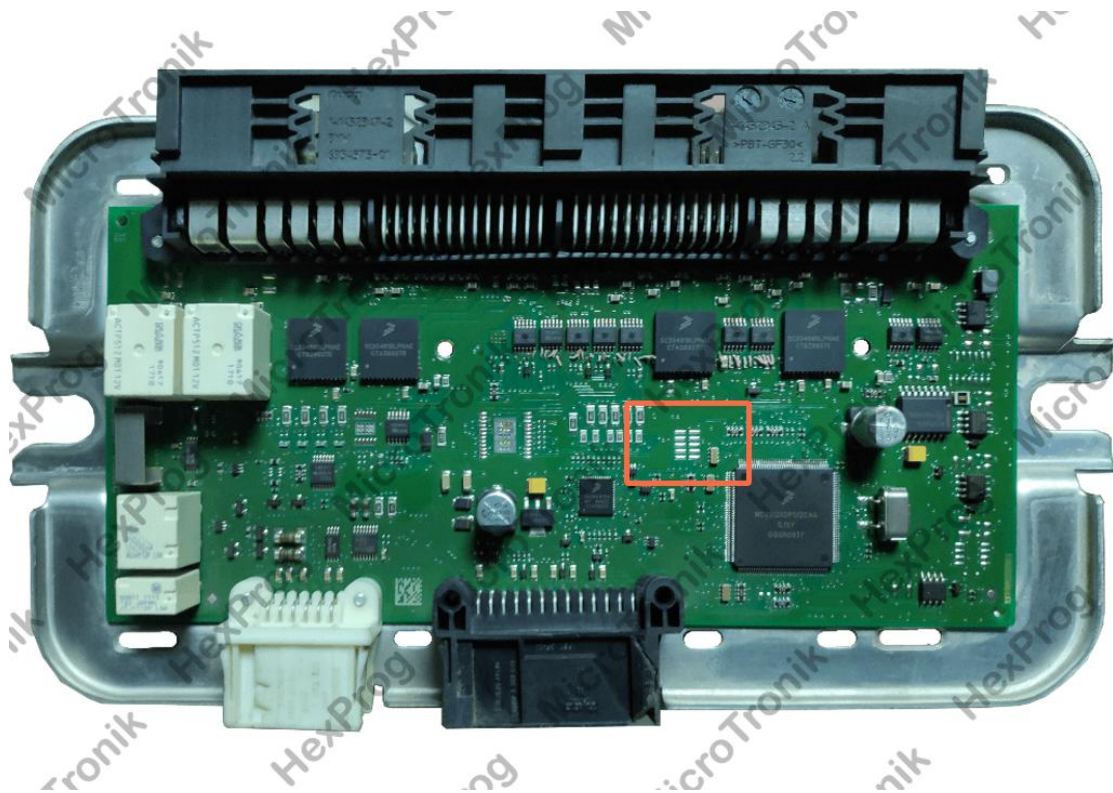


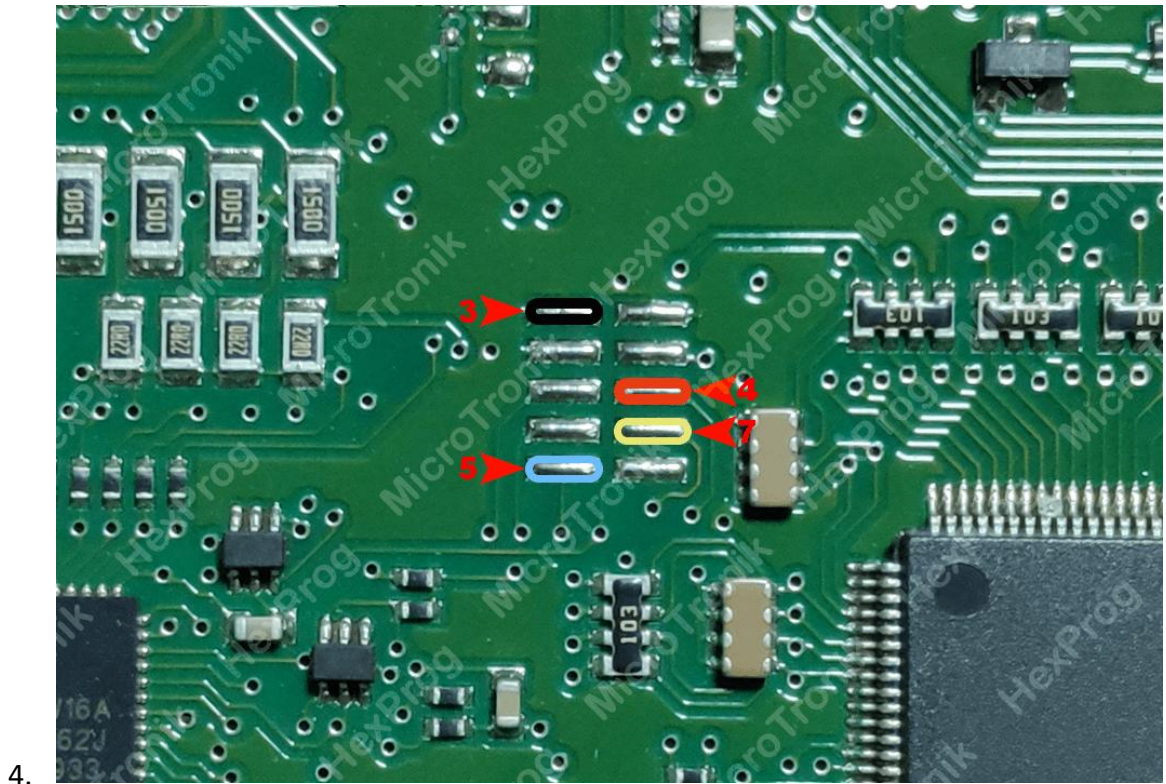
FRM3 F-Series BDM WIRING

1. Unplug FRM from the car (Located under driver side trim panel for pedal mechanism. Careless Removal of the module may cause a damage to the car or the control itself, it must be carried under user's RISK)
2. Remove FRM board from the casing



FRM3 F-Series

3. Solder wires to FRM based on the below connection diagram using BDM cable



4.

FRM3 F-Series Wiring

4. Select the FRM/CPU version from HexProg software
5. Do the necessary operations on software
6. Unsolder wires
7. Connect FRM back to car

